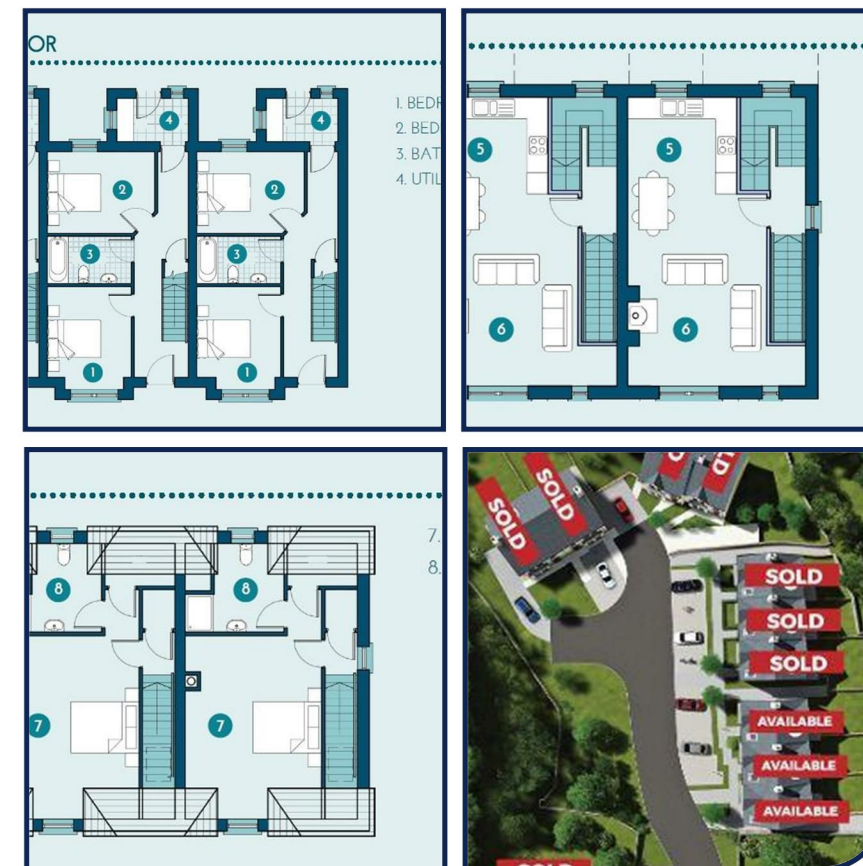



£350,000



Unit 1 The View, Beach Road, Portballintrae, BT57



- Luxurious 3 Storey Townhouse
- High Specification Turnkey Finish
- Spacious Well Laid Out Accommodation
- Ideal Holiday Home
- Global Homes 10 Year Warranty

Energy Efficiency Rating		
	Current	Potential
Very energy efficient - lower running costs		
(92 plus) A		
(81-91) B		
(69-80) C		
(55-68) D		
(39-54) E		
(21-38) F		
(1-20) G		
Not energy efficient - higher running costs		
Northern Ireland	EU Directive 2002/91/EC	

VIEWING STRICTLY BY APPOINTMENT ONLY

Agent: **Bensons**
9 Dunmore Street, Coleraine
Tel. 028 703 43677/21133
www.bensonsni.com

1. Every care has been taken with the preparation of these particulars, but complete accuracy cannot be guaranteed. In all cases, buyers should verify matters for themselves. If there is any point, which is of importance to you, please obtain professional assistance, or let us know and we will verify it for you.
 2. Where property alterations have been undertaken buyers should check that relevant permissions have been obtained.
 3. These particulars do not constitute a contract or part of a contract.
 4. All measurements quoted are approximate.
 5. Photographs are reproduced for general information and it cannot be inferred that any item shown is included in the sale.

Superb New Build 3 Storey Townhouse in the luxurious new development 'The View'

Ground Floor

All Measurements approximate

Bedroom 1

9'10" x 10'5" (3 x 3.2)

Bedroom 2

12'5" x 9'6" (3.8 x 2.9)

Bathroom

9'10" x 5'6" (3.0 x 1.7)

Utility

8'2" x 4'11" (2.5 x 1.5)

First Floor

All Measurements approximate

Kitchen

9'10" x 8'10" (3.0 x 2.7)

Lounge/Dining

12'9" x 17'8" (3.9 x 5.4)

Second Floor

All Measurements approximate

Bedroom 3

16'4" x 16'4" (5 x 5)

Ensuite

7'2" x 9'6" (2.2 x 2.9)

