



Apt 9, Tivoli Court
142 Upper Lisburn Rd
Belfast
BT10 0BG

Asking Price
£129,950

Dougan

RESIDENTIAL

Telephone 028 9030 8855
www.douganproperty.com



KEY FEATURES

- Well Presented, Duplex Apartment In The Heart Of Finaghy Village
- Well Established, Gated Development
- Walking Distance To Many Local Shops
- Belfast City Centre Easily Accessible By Bus, Car or Rail
- Bright And Spacious Living Room
- Modern Kitchen With Dining Area
- Two Generous Bedrooms (Master Ensuite)
- Separate Luxury First Floor Bathroom
- Ground Floor W.C
- Gas Heating
- Double Glazing
- Lift & Stair Access From Street Level
- Private, Gated Parking With Remote Control Entry
- Early Viewing Advised



SUMMARY

Stunning duplex apartment perfectly located in a popular and well established development in Finaghy, South Belfast. The property is within walking distances of many shops and amenities.

The apartment is deceptively spacious and comprises of a living room, modern kitchen with dining area and w.c on the first floor. Two bedrooms (master with ensuite) and a separate luxury bathroom are to the second floor.

The apartment further benefits from lift access, secure gated parking, gas heating and double glazing.

Early viewing is advised.

ACCOMMODATION:

First Floor

ENTRANCE HALL: Wooden floor, panelled radiator

LIVING ROOM: 13' 8" x 10' 2" (4.17m x 3.1m) Wooden floor, feature fireplace, double panelled radiator, intercom entry system for front and rear gated entrance and gated car park

W.C.: Low flush w.c, wash hand basin, tiled floor, panelled radiator, extractor fan

KITCHEN WITH DINING AREA : 15' 0" x 9' 7" (4.57m x 2.92m) Excellent range of high and low level units, formica work surfaces, 1.5 stainless steel sink unit and mixer taps, integrated oven and four ring gas hob, extractor fan, integrated fridge freezer, integrated washing machine, partly tiled walls, tiled floor, storage cupboard with gas fired central heating boiler, double panelled radiator

Second Floor

BEDROOM (1): 17' 4" x 10' 3" (5.28m x 3.12m) Wood strip flooring, panelled radiator

ENSUITE SHOWER ROOM: Fully tiled shower cubicle with Red Ring electric shower, low flush w.c, pedestal wash hand basin with chrome mixer taps, partly tiled walls, tiled floor, double panelled radiator, extractor fan

BEDROOM (2): 11' 6" x 9' 9" (3.51m x 2.97m) Wood strip flooring, double panelled radiator

BATHROOM: White suite comprising of a panel bath with overhead shower, low flush w.c, pedestal wash hand basin with chrome mixer taps, tiled floor, partly tiled walls, panelled radiator, extractor fan

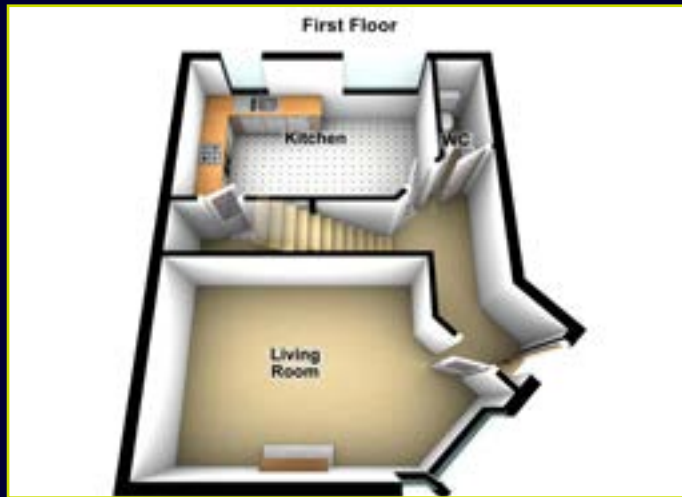
Outside

Ground floor, secure gated parking with remote entry. First floor communal courtyard with decking and built in seating.

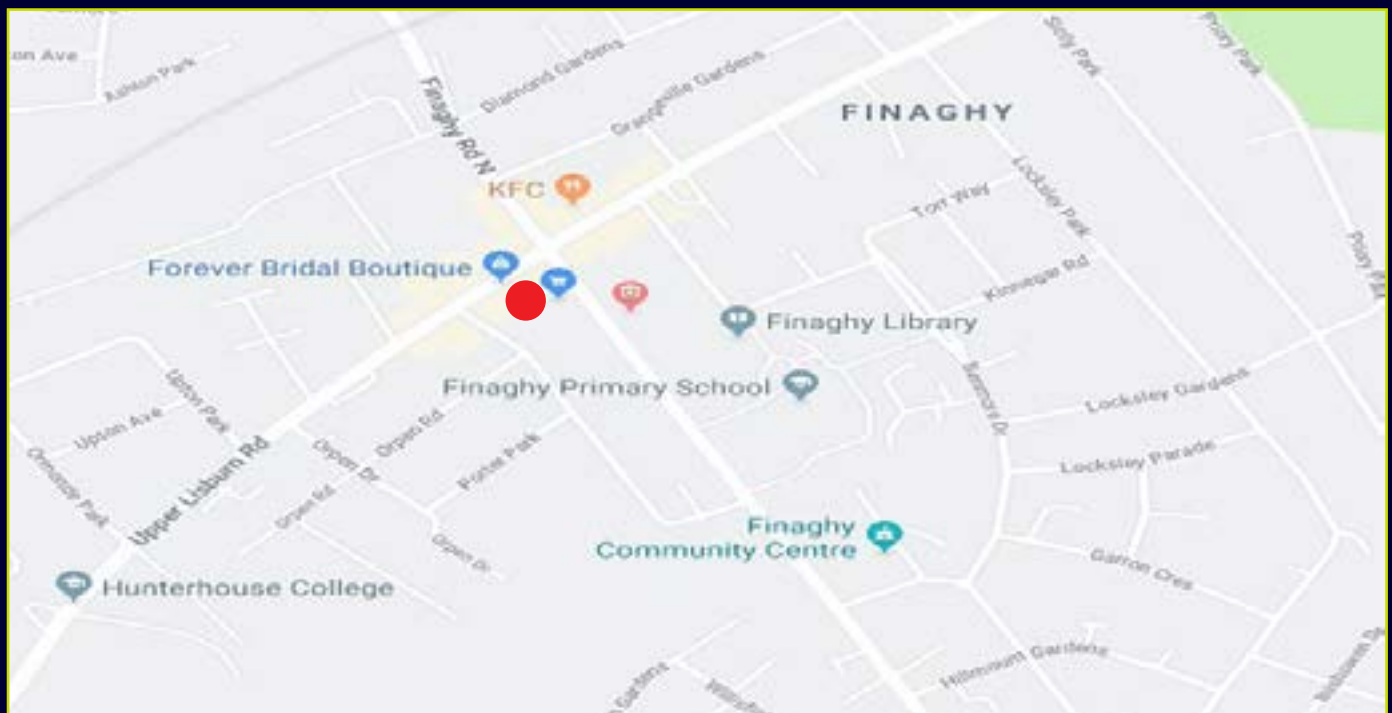




FLOOR PLANS (NOT TO SCALE)

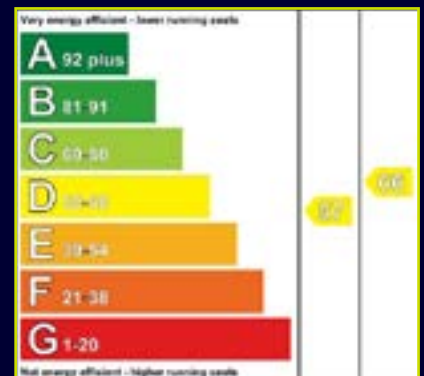


LOCATION MAP



LOCATION: Tivoli Court is located at the corner of Orpen Park and the Upper Lisburn Road in Finaghy, South Belfast

EPC



Dougan
RESIDENTIAL

6 Orpen Shopping Centre Upper Lisburn Road
Belfast BT10 0BG
Telephone 028 9030 8855
Email info@douganproperty.com
Web www.douganproperty.com



Dougan Residential for themselves and for the Vendors or Lessors of the property whose agents they are give notice that; i) these particulars are given without responsibility of Dougan Residential or the Vendors or Lessors as a general outline only, for the guidance of prospective purchasers or tenants, and do not constitute the whole or any part of an offer or contract; ii) Dougan Residential cannot guarantee the accuracy of any description, dimensions, references to condition, necessary permissions for use and occupation and other details contained herein and any prospective purchasers or tenants should not rely on them as statements or representations of fact but must satisfy themselves by inspection or otherwise as to the accuracy of each of them; iii) no employee of Dougan Residential has any authority to make or give any representation or warranty or enter into any contract whatsoever in relation to the property; iv) VAT may be payable on the purchase price and/or rent, all figures are quoted exclusive of VAT, intending purchasers or lessees must satisfy themselves as to the applicable VAT position, if necessary by taking appropriate professional advice; v) Dougan Residential will not be liable, in negligence or otherwise, for any loss arising from the use of these particulars.